



## RTR-5W Network Connected Wireless Data Collector

TandD introduces the new RTR-5W wireless data collector for use with its family of RTR-5x data loggers. The RTR-5W incorporates TandD's proprietary ProDigio chipset for implementing full network connectivity while allowing wireless access for downloading of logged data or monitoring of real-time values from any of the RTR-5x wireless data loggers. The ProDigio chipset supports a built-in 10 base-T Ethernet connection or an optional 802.11b wireless adapter. The chipset includes an HTTP server that facilitates access to logger data from any PC using a standard web browser over a local area network or the internet.



### Use with any RTR-5 Series Data Logger



The RTR-5W is completely compatible with TandD's RTR-5 family of wireless data loggers. Download logged data or monitor current values from a nominal range of 100 meters. TandD's wireless loggers include an internal sensor temperature model, with an IP-67 water resistance rating, and external sensor temperature, temperature + humidity, voltage, pulse and switch closures, events and soil moisture units that carry IP-64 ratings. The RTR-5 series data loggers are compact, battery portable and all models include an LCD display for reading current values. Battery life is nominally 6 months for standard models but can exceed 2 years with the "L" version loggers. An external power adapter is also available for use when battery operation is not desirable.

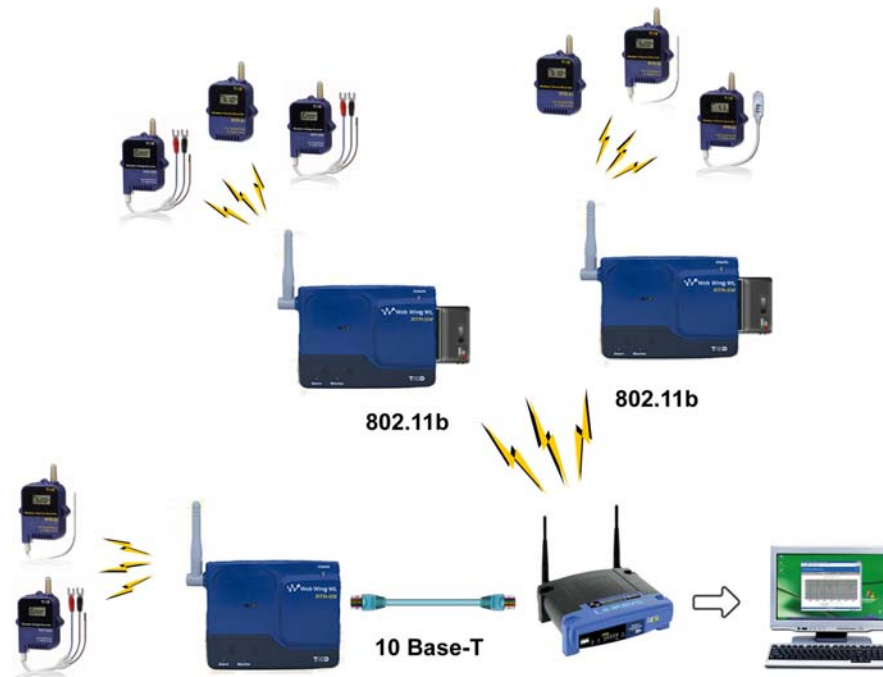
**TandD US, LLC.**

Phone: (518) 669-9227 Fax: (518) 583-0917 E-Mail: [inquiries@tandd.com](mailto:inquiries@tandd.com)



## Configure Each System to Your Specific Requirements

Each RTR-5W can register up to 3,840 loggers that can be arranged in up to 60 groups. Multiple RTR-5W data collectors can be installed on the same network so that there is virtually no upper limit to the system that can be implemented. Data collectors can be connected through the standard 10 base-t wired Ethernet connector, or through an 802.11b connection with the use of an optional CF wireless LAN adapter card, in any combination



## Automatically Download Data

In addition to monitoring values in real-time, or downloading logged data on demand, the RTR-5W includes an Auto-Download feature. The system can be configured to download data from individual loggers at a fixed time of day or at fixed intervals. Data from each logger will be automatically stored in its assigned file/folder with a file name of Unit\_Date\_Time. Data can be selectively stored in either TandD's proprietary .trx file format, for easy viewing with the included software, or as ASCII data, such as CSV, etc. for access by external applications.

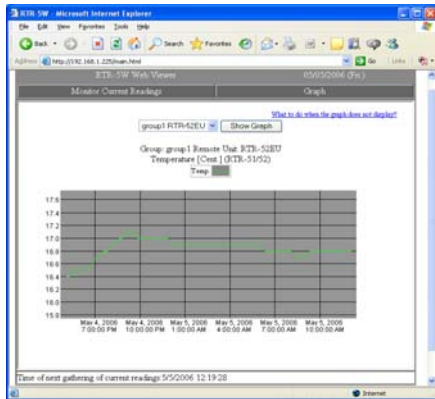
Date / Time	GROUP1 / D129	GROUP1 / D129	GROUP1 / Two
06/07/2005 17:14:00	92.660	28.000	89.600
06/07/2005 17:15:00	92.660	28.000	89.600
06/07/2005 17:16:00	92.660	28.000	89.780
06/07/2005 17:17:00	92.660	28.000	89.780
06/07/2005 17:18:00	92.660	28.000	89.780
06/07/2005 17:19:00	92.840	28.000	89.780
06/07/2005 17:20:00	92.840	28.000	89.780
06/07/2005 17:21:00	92.840	28.000	89.780
06/07/2005 17:22:00	92.840	28.000	89.780
06/07/2005 17:23:00	92.840	28.000	89.780
06/07/2005 17:24:00	92.840	28.000	89.780
06/07/2005 17:25:00	92.840	28.000	89.960
06/07/2005 17:26:00	92.840	27.000	89.960
06/07/2005 17:27:00	92.840	27.000	89.960
06/07/2005 17:28:00	92.840	27.000	89.960
06/07/2005 17:29:00	92.840	27.000	89.960
06/07/2005 17:30:00	92.840	27.000	89.960
06/07/2005 17:31:00	92.840	27.000	89.960
06/07/2005 17:32:00	93.020	27.000	89.960
06/07/2005 17:33:00	93.020	27.000	89.960
06/07/2005 17:34:00	93.020	27.000	90.140
06/07/2005 17:35:00	93.020	27.000	90.140
06/07/2005 17:36:00	93.020	27.000	90.140
06/07/2005 17:37:00	93.020	27.000	90.140
06/07/2005 17:38:00	93.020	27.000	90.140
06/07/2005 17:39:00	93.020	27.000	90.140

**TandD US, LLC.**

Phone: (518) 669-9227 Fax: (518) 583-0917 E-Mail: [inquiries@tandd.com](mailto:inquiries@tandd.com)



## Monitor Readings With a Standard Web Browser



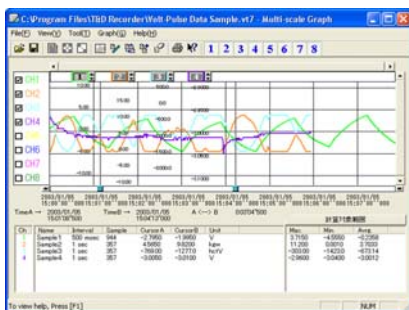
Access each RTR-5W and all of its attendant data loggers from any PC on the network using a standard web browser. Through the browser you can monitor current values and view a graph of most recently recorded data. The RTR-5W incorporates an http server allowing for access to data and delivery through the internet, as well as viewing of current values on a cell phone.

## E-Mail Warnings

The RTR-5W also includes an SMTP client that can initiate e-mails. The unit's software allows for sending warning e-mail messages to up to 5 different addresses when preset limits, either high or low, are exceeded. This includes text messages to cell phones. The RTR-5W also incorporates a contact closure in the event preset limits are exceeded that can be used to activate an alarm, light or other external device.



## Software Included



As with other TandD products, the RTR-5W ships complete with all the software required for use- free of charge! This includes the RTR-5W for Windows package, which provides all the tools required for system set up, operation and downloading of data. Also included are Multi-Scale Graph, TandD's multi channel data viewing software and Event Viewer, which permits display of logged pulse and event data. These flexible packages allow for exporting of data in

ASCII formats, such as CSV, for use in Excel or other external applications. Each unit also ships with a Network Settings Utility that facilitates setup on a LAN.

**TandD US, LLC.**

Phone: (518) 669-9227 Fax: (518) 583-0917 E-Mail: [inquiries@tandd.com](mailto:inquiries@tandd.com)