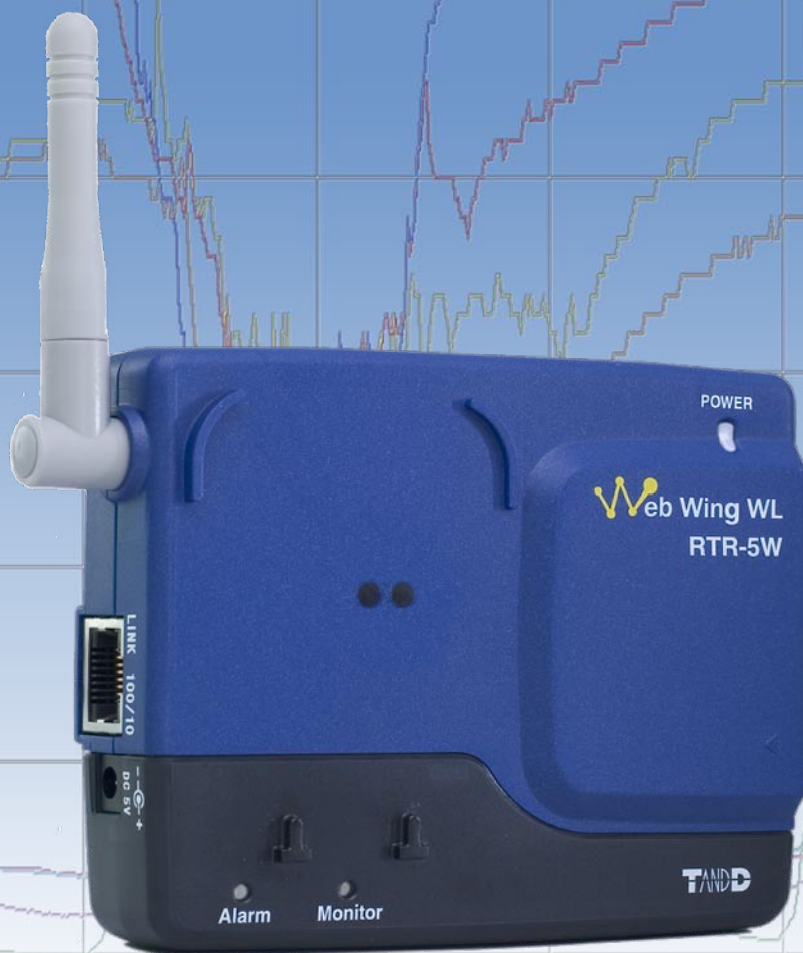


## Network Connected Wireless Data Collector



- **Wireless Data Collection** ▪ **Monitor Real Time Values**
  - **LAN Connection** ▪ **Wi-Fi Option**
- **Web Enabled** ▪ **Internet Ready** ▪ **E-Mail Warnings**
  - **Use With Any RTR-5 Series Data Logger**

# Wireless Data Collector

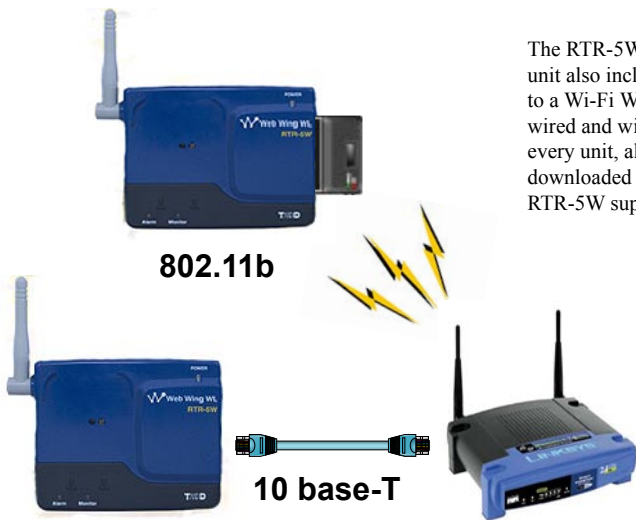
With the introduction of the RTR-5W Web Wing, TandD greatly expands the functionality of its RTR-5x series data logger family with the addition of network connected data collection. Now, data can be collected in real-time, on demand or by scheduled download from any of these wireless loggers through the convenience and flexibility of a local area network. Literally thousands of loggers can be deployed, managed, configured and read using TandD's ultra-reliable packet transmission technology from any number of RTR-5W data collectors attached to the network.

- Use with any RTR-5x Series Data Logger
- Up to 60 Groups of 64 Loggers Each
- Monitor Real-Time Values
- Download on Demand or by Schedule
- Wireless Configuration of Logger Settings



## Network Connected

The RTR-5W connects directly to a wired LAN through the built in 10/100 base-T Ethernet interface. The unit also includes an option slot that can accept a CF format 802.11b wireless adapter card for connection to a Wi-Fi Wireless LAN. Multiple RTR-5W units can coexist on the same network in any combination of wired and wireless connections. Once installed using TandD's Web Utility software that is included with every unit, all RTR-5W Data Collectors and their registered data loggers can be accessed, monitored, downloaded and configured, simply and easily, from any PC on the network. For wireless connection, the RTR-5W supports WEP link encryption.



- Built In 10/100 base-T Ethernet
- Wireless LAN Option
- Access from any PC on Network
- Multiple Units on Same Network
- Mix Wired + Wireless Connections

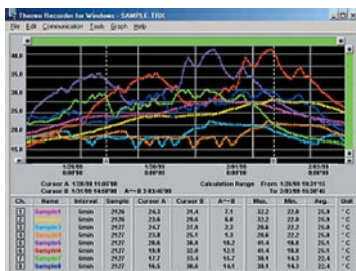
## Internet Connectivity

The RTR-5W incorporates a Web Server that allows access and control over the Internet. Using a standard Browser, such as Internet Explorer, it is possible to download logged data, monitor real time values and configure the wireless loggers from a PC anywhere in the world. The RTR-5W also has a built in SMTP client, and can generate warning e-mails up to 5 different addresses when preprogrammed limits are exceeded, without the need for a PC.

- Integrated Web Server
- View & Control with Standard Browser
- Originates Warning E-Mails



## Software



As with other TandD products, the RTR-5W ships complete with all the software required for use- free of charge! This includes the RTR-5W for Windows package, which provides all the tools required for system set up, operation and downloading of data, complete with TandD's Auto Download feature that allows for collection of logged data at either a set interval or a set time of day. Also included are Multi-Scale Graph, TandD's multi channel data viewing software and Event Viewer, which permits display of logged pulse and event data. Each unit also ships with a Network Settings Utility that facilitates setup on a LAN.

- 8 Channel Viewer
- Pulse / Events Viewer
- Monitor Real-Time
- Print Graphs or Tables
- Export Data as CSV
- Included Free!



**T&D Corporation**  
5652-169 Sasaga Matsumoto City,  
Nagano 399-0033 Japan  
Facsimile(+81)263-26-4281  
E-mail: overseas@tandd.co.jp



**TandD US, LLC.**  
Phone: (518) 669-9227  
Fax: (413) 639-9227  
E-mail: inquiries@tandd.com

<http://www.tandd.com/>